

# Autochthonous Cases of *Dirofilaria* in Dogs from Timiș County (Western Part) Romania

Roberta Ciocan<sup>1</sup> and Narcisa Mederle<sup>2</sup>

<sup>1</sup> Szent István University

*Received: 7 December 2012 Accepted: 3 January 2013 Published: 15 January 2013*

---

## Abstract

**Background:** Taking into consideration that dirofilariosis spreading in Romania, in this study we intended to determine the prevalence of *Dirofilaria* spp. infection in dogs from Timiș County. **Methods:** The epidemiological research was conducted between February 2008 and October 2010, on a total of 457 dogs. The modified Knott's method was used to identify the *Dirofilaria* spp. microfilariae. Blood samples positive for microfilariae were examined using the polymerase chain reaction (PCR), at the "Szent István" University, Faculty of Veterinary Science in Budapest, Hungary in two periods 2009 and 2010. **Results:** Using the modified Knott's method, 33 dogs were positive for microfilariae (7.2

---

**Index terms**— *dirofilaria immitis*, *dirofilaria repens*, dog, timiș county, romania.

## 1 Background

*Dirofilaria immitis* and *Dirofilaria repens* represent the most important filarioid species in Europe because of their pathogenicity on dog's health and because of their zoonotic potential [11]. *D. immitis* is commonly found in the pulmonary arteries and the right ventricle of dogs and causes canine heartworm disease, but it also occurs in cats and humans [18]. *D. repens* is the less pathogenic form, infesting subcutaneous tissues [14], occasionally, dermal swelling and subcutaneous nodules containing adult worms may be observed [22].

In the past decade the infections caused by filarioid nematodes in dogs and cats are apparently spreading in different geographic areas [10].

The distribution of *Dirofilaria* spp. in different European countries has been attributed to several factors including the introduction of new species of mosquitoes like *Aedes albopictus* [5], and consequence of climate changes together with increased pet travel [23].

Cutan dirofilariosis is considered an emerging zoonosis in Europe, though most cases of *D. repens* infections are benign in humans because the adult nematode is localized mainly in subcutaneous tissue. Occasionally this parasite can cause subcutaneous nodules or ocular lesions sporadically it can reach deeper tissues. In lesions the immature or adult nematode can be formed nodules, which can mimic a tumor [15,17]. Human *D. repens* infection cases have been described from northeastern countries such as Hungary [19], Slovak Republic [16], Poland [24] and Russia [12]. Recent reports are from Croatia [4], Romania [13], Russia [9] and France [15].

## 2 II.

## 3 Materials and Methods

### 4 a) Study Area

### 5 b) Blood Sampling

The epidemiological study was carried out from February 2008 to October 2010, with 457 asymptomatic dogs, of different breeds, aged between 6 months and 15 years. In this group of dogs 183 were females and 274 males.

Dogs examined were from 42 localities in Timiș County. Some of them belonged to different owners and some dogs were from shelters. Blood samples were collected into vacutainers with EDTA anticoagulant.

## 6 ( D D D D ) G

The liquid was centrifuged, and the sediment was mixed with equal parts of 1:1000 methylene blue dyes. The colored sediment was spread on a slide, and covered with coverslip, and was examined under the microscope, using the 10x and 40x light microscope objective.

## 7 d) Molecular Techniques

Positive blood samples with microfilariae were examined using molecular techniques, at the Department of Parasitology and Zoology of Faculty of Veterinary Science "Szent István" University in Budapest, Hungary, in 2009 and 2010. The DNA extraction was performed in 100 μl of blood collected on EDTA, for each positive sample. We used the Blood and Tissue Dneasy kit (QIAGEN). The general primers and the thermal profile described by Asiraghi et al., 2006 [6] were used for the PCR, with species specificity for detecting *D. repens* and *D. immitis* presence. The migration of amplicons was performed by electrophoresis in 1.5% agarose gel. The ethidium bromide dye was used for preparing the agarose gel. After the migration of PCR products through the agarose gel, the gel image with the migrated DNA fragments was photographed using a Kodak EDAS 290 Polaroid system. The PCR-products were sequenced by Biomi Ltd. (Gödöllő, Hungary) directly using the ABI technology, in order to verify the specificity of PCR reactions. e) Diro Speed® Test / Heartworm (Bio Veto Test, France)

Five samples (5/33) positive for microfilariae, not examined by PCR, were investigated to detect *D. immitis* antigen. The examination of the samples was processed according to the manufacturers description.

## 8 III.

## 9 Results

As a result of the examination of blood samples, using the modified Knott's method, the microfilariae were identified in 33 of the 457 dogs examined (Table ??). The prevalence of *Dirofilaria* spp. in dogs, according to the modified Knott's method was 7.2%. The microfilariae examined using the Olympus microscope with video extension, and 400 x objectives, showed the morphology of *D. repens* microfilariae. This means the absence of the cephalic hook, the front end having a slightly tapered shape, and the filiform caudal end presented an "umbrella handle" shape (Figure ??,2,3). The length of the microfilariae observed was between 330-380 μm.

The dogs infected with *Dirofilaria* spp. belonged to 16 breeds and 17 of them being males and 16 females aged between 2 and 13 years (Table ??, 3).

The size of the fragments amplified for the 12SrDNA in 18 samples (18/28) were ~390 base pairs and suggested that the samples isolated from dogs with microfilaremia belonged to the *D. repens* species, and ~450 base pairs at a sample of 28, that suggested an infection with *D. immitis*. An example is shown in Figure 4.

Only one dog tested positive for infection with *D. immitis*, a Rottweiler breed female, aged 11 years, from Timișoara. The result of the infection with *D. immitis*, obtained by PCR, is questionable. At this patient further investigation were not possible. The number of microfilariae (mf) / ml of blood in dogs with dirofilariosis ranged from <30 to 5000 mf / ml of blood. This molecular biology study, performed for the first time in Romania, shows that the dogs diagnosed with microfilaremia were infected with *D. repens* and *D. immitis*. Tested with the Speed®Diro / Heartworm (Bio Veto Test, France), all 5 dogs (5/33) examined were negative for antigens of *D. immitis*.

## 10 IV.

## 11 Discussions

Most dog of diagnosed with microfilariae of *Dirofilaria* spp. came from localities crossed by a river, such as Timiș, Albina, Bega Veche, Behela rivers and the Bega Channel (Figure 5). The rivers, the lakes and the ponds are considered as preferred habitats for mosquito's larval development. So far, there are no statistics available concerning the species of mosquitoes identified in Timiș County. The increasingly high temperatures in summer, the mild winters, the large number of vectors, and numerous stray dog and the dog imports, has led to dirofilariosis spread in the Western part of Romania.

The dogs with microfilaremia were considered local cases because they have not left our country and have not been imported from Europe. Taking into consideration the results of this research we concluded that the infection with *D. repens* is endemic in the Western part of Romania.

The number of dogs carried subcutaneous dirofilariosis is growing, and this is why this study should be continued. The *D. immitis* parasitism was not identified so far in the Western part of Romania. The case tested positive by PCR in this survey, is the first one found.

Between 2008 and 2010, several necropsies in dogs, were achieved at the Necropsy Pathology Laboratory in Timișoara, for "finding" *D. immitis*. Special attention was given to the thoracic cavity and heart. Using

---

this technique, only adult *D. repens* were found, located in the subcutaneous tissue in certain body regions. An interesting case was represented by a dog, which presented a *D. repens* nematode in the scrotum after orchidectomy. This surgical procedure was performed in a veterinary clinic EUROPET-FV in the city.

In Hunedoara County (central-western part of the country) 92 dogs were tested at the shelter. Two dogs were diagnosed with *D. repens* (2.2%, 2/92) [7]. In 2009 -2010, in Arad, 30 dogs were tested for microfilariae. A single dog was diagnosed with subcutaneous dirofilariosis (3.3%, 1/30) (Ciocan, unpublished observations).

In Bucharest (Southeast part of the country) the infection with *D. immitis* and *D. repens* of dogs had been confirmed long time ago. Coman et al. (2007) from the "Spiru Haret" University of Veterinary in Bucharest confirms the presence of *D. immitis* in 12 dogs examined (23.1%, 12/52) [8]. Tudor et al. (2008) reported a prevalence of 29.3% (34/116) for the *D. immitis* infection in dogs in the Bucharest area [21]. A year later, in Bucharest the diagnosis of *D. immitis* was confirmed again, after the parasitological examination of 35 dogs [20].

In Iași (Northeastern part of Romania) in March 2009 was reported the first case of infestation with *D. immitis* in dogs, and afterwards 27 new cases were diagnosed in dogs raised by owners and 41 cases in dogs from shelters. A total number of 303 dogs were examined and 68 of them tested positive for microfilariae (Knott's method), with a prevalence of 22.4% (*D. immitis*). Using the Snap Heartworm rapid test, 16 dogs tested positive for *D. immitis* (5.3%). The first case of *D. repens* infestation was diagnosed in February 2009 [1,2]. Acatrinei et al. (2008) confirms the presence of *D. immitis* in four dogs from the southeast part of the country (Tulcea) [3].

V.

## 12 Conclusions

Following the research, we concluded that the prevalence of *D. repens* infection is high in Timiș region. The Western Region meets all the conditions for developing of Culicidae larvae and therefore canine dirofilariosis may increase in the future.

The presence of stray dogs in many places represents a reservoir in the spread of both dirofilarioses in other animals and humans. It is pointed out that Timiș County bordered with Hungary and Serbia where the subcutaneous dirofilariosis cases in dogs are very frequent. A special attention should be given on imported dogs. Veterinarians and dog owners should be informed of the presence of *D. immitis* and *D. repens* in this part of Romania and therefore, it is very important to inform the dog owners about the available prevention possibilities.

## 13 VI.

## 14 Volume XIII Issue II Version I

1 2

---

<sup>1</sup>© 2013 Global Journals Inc. (US)

<sup>2</sup>Autochthonous Cases of *Dirofilaria* in Dogs from Timiș County (Western Part) Romania



Figure 1:



2

Figure 2: Figure 2 :



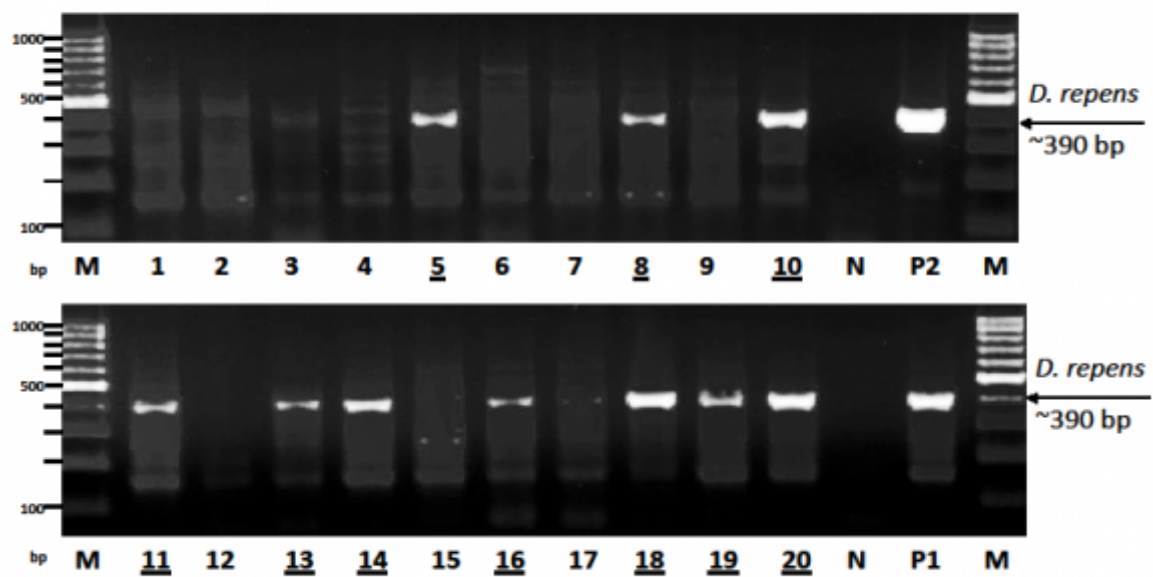
3

Figure 3: Figure 3 :



Figure 4:





4

Figure 5: Figure 4 :

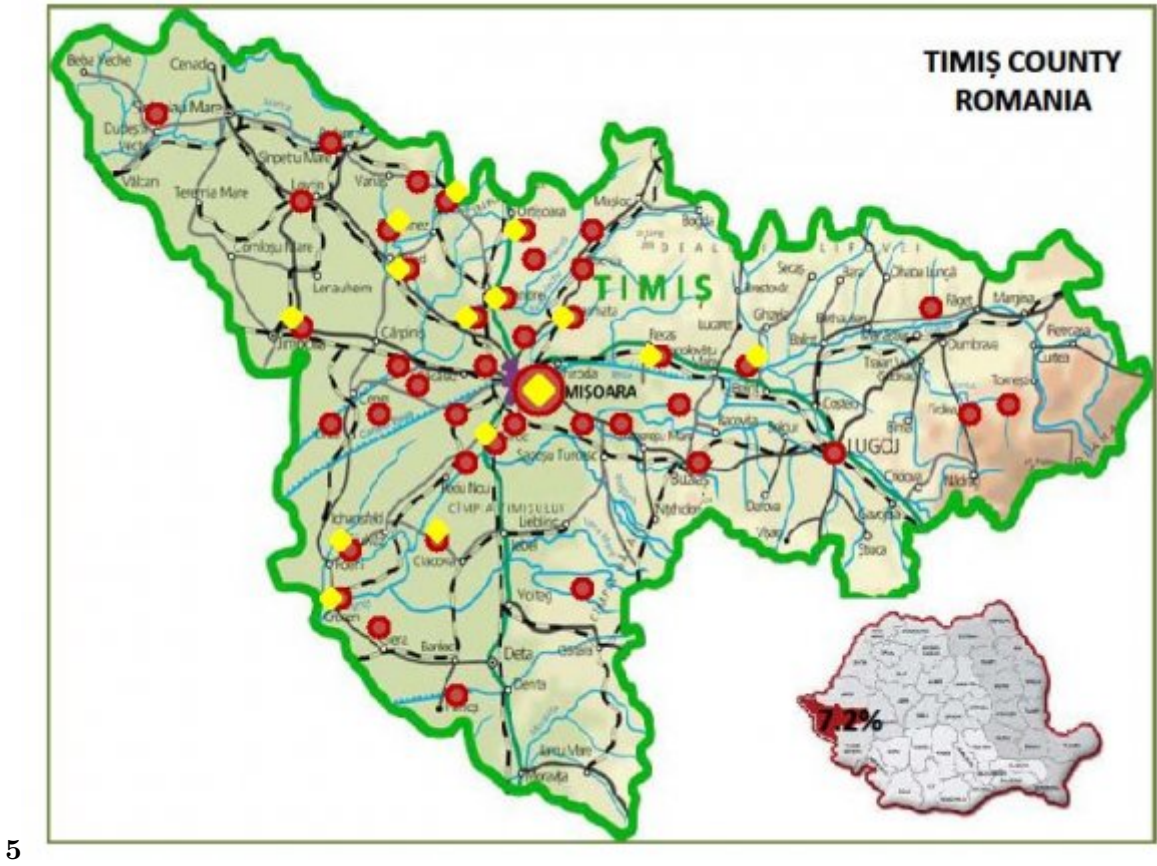


Figure 6: Figure 5 :

Figure 7:

3

Sex	n	Knott's test positive	Prevalence (%)
Males	274	17/274	6.2%
Females	183	16/183	8.7%
Total	457	33/457	7.2%

Figure 8: Table 3 :



## .1 Acknowledgements

We would like to express our gratitude for the supporting of the PhD program at Faculty of Veterinary Science (Budapest) in using the molecular technique (PCR).

We want to thank Prof. dr. Gheorghe D?r?bu? from Department of Parasitology and Parasitic Disease, colleges of the Department of Internal Medicine, Reproduction and Parasitological Disease from the Faculty of Veterinary Medicine, Timi?oara, Romania for their support and collaboration.

We are grateful to dr. Felician Ciolea from Timi?oara for presenting the case of dirofilariosis in dogs, identified after the orchidectomy surgical procedure.

## .2 Competing Interests

The author(s) declare that they have no competing interests.

VII.

[City] , Mexico City .

[Nicolas et al. ()] 'A First Human Case of Ocular Dirofilariosis due to *Dirofilaria repens* in Northeastern France'. A Nicolas , M Sabou , B Alain , H Christian , C Ermanno , A B Ahmed . *Journal of Tropical Medicine* 2011. p. .

[Venco et al. ()] 'A mini-invasive procedure for removal of adult *Dirofilaria repens* from subcutaneous nodules in dogs'. L Venco , V Valenti , W Bertazzolo , M Genchi , G Grandi . *J Appl Res Vet Med* 2011. 9 (2) p. .

[Casiraghi et al. ()] 'A simple molecular method for discriminating common filarial nematodes of dogs (*Canis familiaris*)'. M Casiraghi , C Bazzocchi , M Mortarino , E Ottina , C Genchi . *Vet. Parasitol* 2006. 141 p. .

[Cancrini et al. ()] 'Aedes albopictus is a natural vector of *Dirofilaria immitis* in Italy'. G Cancrini , R A Frangipane , I Ricci , C Tessarin , S Gabrielli , M Pietrobelli . *Vet. Parasitol* 2003. 118 p. .

[Mccall et al. ()] 'Chapter 4, heartworm disease in animals and humans'. J W Mccall , C Genchi , L H Kramer , J Guerrero , L Venco . *Adv Parasitol* 2008. 66 p. .

[Walter (2010)] 'Clinical aspects of dermatitis associated with *Dirofilaria repens* in pets. MERIAL pre-Congress of the ESVD-ECVD Meeting'. T Walter . *Figure 1 : D. repens microfilaria in a dog*, (Florence, Italy) 22nd Sept. 2010.

[Acatrinei et al. ()] 'Dirofilaria immitis infection -A new challenge for veterinary practitioners in Ia?i county. Scientific Symposium "Progresses and Perspectives in Veterinary'. D Acatrinei , L Miron , S Dimitriu , A Mustea , L Parasca , R ?oric . *Medicine* 2010. (abstract, pp 57)

[Acatrinei et al. ()] 'Dirofilaria repens infection in dog from Ia?i. Scientific Symposium "Progresses and Perspectives in Veterinary'. D Acatrinei , L Miron , Gh Solgan , R ?oric , A Mustea . *Medicine* 2010. (abstract, pp 58)

[Ciocan et al. ()] 'Dirofilaria repens infection prevalence in Hunedoara County. Veterinary Medicine Symposium "Progress and Prospects in Veterinary'. R Ciocan , Gh D?r?bu? , M S Ilie , M Imre , I Hotea . *Medicine* 2010. (abstract, pp 39)

[Genchi et al. (2005)] 'Dirofilariasis in humans is it a real zoonotic concern?'. C Genchi , F Simon , L H Kramer . *Proceedings of the 30th World Congress of the World Small Animal Veterinary Association*, (the 30th World Congress of the World Small Animal Veterinary Association) May 2005. p. .

[Tudor et al. ()] 'Epidemiological and clinical features regarding dirofilariosis in dogs. Scientific works C, series, Veterinary Medicine'. P Tudor , M C Br?sla?u , D E Br?sla?u , N Tudor . *Bucure?ti* 2009. 3 p. .

[Coman et al. ()] 'Epidemiological and paraclinical aspects in canine dirofilariosis. Scientific Works'. S Coman , B Bacescu , T Coman , Gh Parvu , C Dinu , T Petrut , N Bercaru , A Amfim . *Veterinary Medicine Timi?oara* 2007. p. .

[Pampiglione et al. ()] 'Human dirofilariasis due to *Dirofilaria (Nochtiella) repens*: an update of world literature from'. S Pampiglione , F Rivasi , G Angeli , R Boldorini , R M Incensati , M Pastormerlo , M Pavesa , A Ramponi . *Parassitologia* 1995 to 2000. 2001. 42 p. .

[Bezi? ()] 'Human dirofilariasis in Croatia'. J Bezi? . *Acta Dermatovenerol Croat* 2009. 17 p. 83.

[Szénási et al. ()] 'Human dirofilariosis in Hungary: an emerging zoonosis in central Europe'. Z Szénási , H Kovács , S Pampiglione , M L Fioravanti , I Kucsera , T Balázs , L Tiszlavicz . *Wien Klin Wochenschr* 2008. 120 p. .

[Kramer et al. ()] 'Human subcutaneous dirofilariasis in Russia'. L Kramer , W Kartashev , G Grandi , R Morchón , S A Nagornii , P Karanis , F Simón . *Emerging Infectious Diseases* 2007. 13 p. .

[Soulsby and Nematoda ()] *In: Helminths, Arthropods and Protozoa of domesticated animals*, E J L Soulsby , Nematoda . 1982. London: Bailliere Tindall. p. .

[Genchi et al. ()] 'Is heartworm disease really spreading in Europe?'. C Genchi , L Rinaldi , C Cascone , M Mortarino , G Cringoli . *Vet. Parasitol* 2005a. 133 p. .

- 183 [Acatrinei et al. ()] 'Morphological investigations in *Dirofilaria immitis* invasions in dogs'. D Acatrinei , S Pa?ca  
184 , S Mihalachi . *Ia?i. Scientific Works Veterinary Medicine* 2008. 51 (10) p. .
- 185 [M?nescu et al. ()] 'Subconjunctival nodule with *Dirofilaria repens*'. R M?nescu , D B?r?scu , C Mocanu , H  
186 Pîrv?nescu , I Mîndril? , M B?l?oiu , A Turculeanu . *Surgery (Bucharest)* 2009. 104 (1) p. .
- 187 [Figurnov et al. ()] 'The first case of detected dirofilariosis in the Amursk Region'. V A Figurnov , G A Moiseenko  
188 , O K Moshkonova , A Godovaniuk , L A Sycheva . *Med Parazitol (Mosk)* 2009.
- 189 [Nováková et al. ()] 'The report of subcutaneous *Dirofilaria repens* infection in the Slovak Republic'. E Nováková  
190 , J Kin?eková , K Adamicová , J Kompaniková , V ?vihrová , K ?imeková , J Krause , J Pavlinová , E  
191 Dvoro??áková . *Helminthologia* 2011. 48 (1) p. .
- 192 [Tudor et al. ()] P Tudor , C Fernoag? , N Tudor , Heartworm . *Dirofilaria immitis) infection in dog. Scientific*  
193 *Works*, 2008. 51 p. .