



GLOBAL JOURNAL OF MEDICAL RESEARCH: H
ORTHOPEDIC AND MUSCULOSKELETAL SYSTEM
Volume 20 Issue 3 Version 1.0 Year 2020
Type: Double Blind Peer Reviewed International Research Journal
Publisher: Global Journals Inc. (USA)
Online ISSN: 2249-4618 & Print ISSN: 0975-5888

Management of Grade 3C Compound Injury of Right Lower Limb with Floating Knee - Salvage Versus Amputation (A Case Report)

By Sharandeep Singh Saluja, Sundar Suriyakumar, Muthumanickam Ramanujam,
B. Sundararaja, Sudharsan Reddy & Dr. N. Jambu

Abstract- Introduction: Severe open injuries of limbs, especially of the femur and tibia when associated with vascular injuries, present major challenges in management. The decision to amputate or salvage can often be a difficult one even for experienced surgeons. Mangled lower extremity results due to high energy trauma especially due to motor vehicle accidents and is defined as injury to three of the four systems in the extremity i.e soft tissues, bone, vascular and nerve. Open fractures are classified by Gustilo and Anderson's classification in which type 3b is a injury where soft tissue loss and primary closure of the wound is not possible and type 3c is any open fracture with vascular compromise.

Keywords: amputation versus salvage, gustilo and anderson's classification, MESS, open fractures.

GJMR-H Classification: NLMC Code: WE 168



Strictly as per the compliance and regulations of:



© 2020. Sharandeep Singh Saluja, Sundar Suriyakumar, Muthumanickam Ramanujam, B. Sundararaja, Sudharsan Reddy & Dr. N. Jambu. This is a research/review paper, distributed under the terms of the Creative Commons Attribution-Noncommercial 3.0 Unported License <http://creativecommons.org/licenses/by-nc/3.0/>), permitting all non-commercial use, distribution, and reproduction in any medium, provided the original work is properly cited.

Management of Grade 3C Compound Injury of Right Lower Limb with Floating Knee - Salvage Versus Amputation (A Case Report)

Sharandeep Singh Saluja ^α, Sundar Suriyakumar ^σ, Muthumanickam Ramanujam ^ρ, B. Sundararaja ^ω,
Sudharsan Reddy [¥] & Dr. N. Jambu [§]

Abstract- Introduction: Severe open injuries of limbs, especially of the femur and tibia when associated with vascular injuries, present major challenges in management. The decision to amputate or salvage can often be a difficult one even for experienced surgeons. Mangled lower extremity results due to high energy trauma especially due to motor vehicle accidents and is defined as injury to three of the four systems in the extremity i.e soft tissues, bone, vascular and nerve. Open fractures are classified by Gustilo and Anderson's classification in which type 3b is a injury where soft tissue loss and primary closure of the wound is not possible and type 3c is any open fracture with vascular compromise.

Case report: We report a case of 27 Years old gentleman who sustained an open 3c Gustilo-Anderson fracture with right floating knee that was initially treated with debridement and external fixator and advised amputation above knee in outside hospital and referred to our hospital for further management. Despite a borderline Mangled Extremity Severity Score (MESS) (Table- 2), due to the overall health status of the patient and local clinical status with preserved plantar sensitivity, reconstruction was attempted. After 8 months of treatment, all wounds healed completely with no pain, and satisfactory motor and sensory function was achieved (fig.18). On examination, anterior tibial artery pulsation was feeble and posterior tibial artery pulsation was absent, subsequently CT right lower limb arteriogram was done after obtaining vascular surgeon opinion. Which reveals posterior tibial vessel under spasm and anterior tibial vessel sluggish blood flow. He underwent right leg and knee wound debridement and reconstruction with ilizarov fixation and soft tissue repair. Subsequently after 7 days he underwent right leg ilizarov realignment and wound debridement with medial gastrocnemius flap + split thickness skin grafting +vacuum assisted closure (VAC) application (fig.17). Postoperatively, he was given rehabilitative care and physiotherapy in the form of non weight bearing mobilisation with walker support. The patient was followed up for the period of two years and he is doing symptomatically better. Based on current literature guidelines and evidence-based medicine, management for borderline cases is proposed to aid clinical decision making in these situations.

Conclusion: With great effort and good team work (like vascular and orthopaedic surgeons) badly comminuted compound injuries (Type III C injury) can be managed well with ilizarov fixation.

Even though the decision of amputation versus Salvage was based on more scientific / scoring system, patient's option should be taken, especially in borderline cases considering the present medico legal scenario.

Keywords: amputation versus salvage, gustilo and anderson's classification, MESS, open fractures.

I. INTRODUCTION

Mangled limb is defined as one that involves a combination of injuries affecting at least 3 out of the four components of the extremity: vascular, nervous, soft tissues and underlying bone. Basically, it is related to type IIIB and IIIC injuries within the Gustilo and Anderson's classification. However, every work commonly uses criteria that do not always fit within this definition. It is a situation that can lead to amputation in 9% of the cases in the first 24 hours and in 21% during the hospitalization [1].

The term "floating knee" was first described by Blake and McBride in 1975 [2]. It is an ipsilateral fracture of the femur and tibia that includes diaphyseal, metaphyseal, and intraarticular regions of the bone. Floating knee injuries occur as a result of a very high-velocity trauma. Road traffic accidents are the most common cause of this type of complex injuries [3]. The incidence of road traffic accidents are on the rise and are often associated with complex life-threatening conditions and extensive soft tissue damage. Management of these injuries varies according to the type and extent of bony and soft tissue involvement. Bertrand and Andrés-Cano state "although the exact incidence is unknown, this condition is generally rare," the incidence is on the rise currently due to the increased trend in high-velocity traumas. Frequently, multiple produced fractures in the same extremity, will add new dimensions to their management. These fractures range can change from simple diaphyseal to complex articular types.

The degree of severity of open fractures is often classified in accordance with the system of Gustilo and Anderson [5, 6]. This takes into account the wound size,

Author α σ ρ ω ¥: Department of Orthopaedic surgery, Sri Ramachandra Institute of Higher Education and Research Centre, Porur, Chennai- 600116, Tamil nadu, India.

Corresponding Author §: Department of Orthopaedic surgery, Sri Ramachandra Institute of Higher Education and Research Centre, Porur, Chennai- 600116, Tamil nadu, India.
e-mail: doctorjambu@gmail.com

fracture pattern and degree of soft-tissue contamination. Type III of this classification corresponds to fractures due to high-energy trauma, with extensive injury to soft tissues, and is divided into three subtypes: types IIIA, IIIB and IIIC, according to the severity of the injury [4, 5, 6].

The extensive damage seen in types IIIB and IIIC may be a veritable challenge, even for surgeons with greater experience. It may require a clinical decision between attempts to salvage the limb and amputation. Clinical advances within orthopaedic, plastic and vascular surgery have provided the means for reconstructing injuries to limbs that, around 20 years ago, would have resulted primarily in amputation. However, some studies have reported that limb salvage is not always the best solution and that early amputation with prosthetic treatment should be recommended in some cases [7, 8].

Some classification scores are used to complement the detailed clinical assessment on the affected limb and aid in making clinical decisions [9, 10]. Helfet et al. [8] established the use of the Mangled Extremity Severity Score (MESS), which grades injuries based on the clinical findings and takes into consideration the characteristics of the injury, the duration of ischemia, the shock and the patient's age. Scores greater than or equal to seven have predictive value for limb amputation [7].

Although much has been now been reported regarding exposed fractures, there is a gap in the literature in relation to studies presenting a high level of evidence that have compared outcomes between limb salvage and amputation. This gap exists because of ethical concerns regarding randomization of patients between these two procedures [11, 12]. Thus, many of the recommendations that are incorporated into the treatment routines for patients with exposed fractures of the tibia and fibula are based on specialists' opinions. Thus, further scientific studies are needed in order to provide scientific backing for surgeons' and patients' choices before the operation.

In the past several decades, limbs with Gustilo type grade IIIC injuries (open fractures of the lower limb associated with vascular injury) have been difficult to salvage and have been treated by primary amputation. With the advancement of surgical technique, especially the use of microsurgery, the salvage rate for grade IIIC lower limb fractures is rising, and the rates of attempted limb salvage are also increasing [13]. Many patients have undergone successful limb salvage [14]. These fractures can be managed by reconstruction or amputation. The decision regarding which option to choose can be difficult for both physicians and patients. Complicating this decision is the young age of many of the patients.

In the past, when there were few reliable options for lower limb reconstruction, amputation was the

preferred choice because salvage attempts generally used skin grafting, which was inadequate to cover exposed bone [15]. This resulted in high rates of osteomyelitis and secondary amputation [15]. The advancement of microsurgical techniques allowed cooperative efforts between orthopedic and plastic surgeons to reconstruct severe open fractures and achieve predictable limb salvage [16]. Most recently, wound care technology has further increased surgeons' ability to treat open tibial fractures [15].

Reconstruction is performed at a much higher rate than primary amputation, despite the lack of evidence indicating better outcomes associated with reconstruction [15]. It is understandable that both physicians and patients will want to salvage an injured limb. Suffering a serious injury, like an open tibial fracture, will have grave physical, emotional and financial consequences, regardless of the treatment method used. The choice of treatment ideally should be based on careful consideration of the available data, however, the overwhelming desire to save the leg, coupled with having the technology to achieve this aim, can cloud the decision-making process for both patients and surgeons. Decision analysis is a powerful tool that can provide evidence when a randomized controlled trial is not practical or ethically feasible. Assigning utilities to these outcomes allows for the comparison and careful examination of complex situations that, otherwise, would be difficult to research.

II. CASE REPORT

27 Year old gentleman who sustained an open grade 3c Gustilo-Anderson fracture with right floating knee that was initially treated with debridement and external fixator and advised amputation above knee in outside hospital and presented to us within 12 hours of initial injury. On head to toe examination, no other musculoskeletal and organ injuries were present. On initial presentation, he was hypotensive (blood pressure- 90/70 mm of hg) and was started on appropriate measures by emergency room team. No known medical co-morbidities were present. He was non smoker, non alcoholic and no drug addiction. On local examination of right lowerlimb:

- a. Right lower limb knee spanning external fixator present.
- b. Lacerated wound of size 20x10 cm extending from distal third of thigh to middle third of leg anteriorly. Wound contamination present (fig.1).
- c. Both femoral condyle fractured fragments and proximal tibial fractured fragments exposed (fig.1).
- d. Patella and lateral tibial condyle absent (fig.1).
- e. Tendons and muscles were exposed (fig.1).
- f. Dorsalis pedis artery pulsation- feeble.
- g. Posterior tibial artery pulsation- absent.
- h. Sensations over right lower limb were intact.

i. Active dorsiflexion and plantar flexion present.

Examination of neurovascular functions-

Vascular-

Anterior tibial artery pulsation feeble.

Posterior tibial artery pulsation were not felt.

Local orthopedics severity were assessed using-

1. Gustilo-Anderson's classification. (fig.4)
2. Modified Fraser's classification (fig.19)

Vascular surgeon opinion was sought and advised to do right lower limb CT angiogram. CT study report shows- Posterior tibial vessel under spasm and Anterior tibial sluggish blood flow. Vascular surgeon advised conservative treatment. According to modified fraser classification it was classified under type IIC. The mangled extremity severity score (MESS) (Table-2) was used to assist in the decision of injuries that also had a vascular component and the total score was found to be 7 (≥ 7 should be consider for amputation). In view of partial vascular injury (Anterior tibial artery pulsation feeble and Posterior tibial artery pulsation were not felt), Ganga Hospital Open Injury Severity Score (GHOISS) was also used which was found to be in borderline range of 16 score (Table-1). Scoring systems provided limited diagnostic benefit. Thus, we had an extensive discussion with the patient and his relatives, in order to point out that any attempt at limb salvage might result to major complications and probably a delayed amputation. In addition, even with salvage severe disability was expected. After discussing and taking consent from patient and his relative he was taken up for combined procedure under orthopaedic and plastic surgery team after obtaining anaesthetic fitness. He underwent right leg and knee wound debridement and reconstruction with ilizarov fixator and soft tissue repair. Intraoperatively, Patella and lateral tibial condyle was found to be absent (fig.1, 5, 6). Patella tendon was sutured to quadriceps tendon. Postoperatively, he was shifted to intensive care unit in view of raised serum myoglobin and CPK levels for which cardiology opinion were sought. After 1 week, patient underwent right leg ilizarov realignment and wound debridement with medial gastronemius flap + split skin grafting + vacuum assisted closure (fig.17). Intraoperative period was uneventful. Intraoperatively gram, fungal and acid fast bacilli stain and culture was sent and found to be negative for organism growth. Postoperatively regular wound inspection and dressing done which was found to be satisfactory clean (fig.17, 18). Blood culture and urine culture shows no growth. He was afebrile (initially he was hypotension which was controlled during the course of treatment) and was hemodynamically stable. Gustillo and Anderson's classification (fig.4) was used in order to highlight the contamination and the soft tissue injuries as a risk factor in the fracture evolution. It was classified as grade 3c (as vascular injury was

present). He was started on rehabilitative care. Range of motion of knee was found to be 0 to 40 degree of flexion with some instability (fig. 18). Strict non weight bearing walking with walker support was encouraged. Quadriceps and hamstring muscle strengthening exercise was started. The treatment was deemed successful and the patient was discharged. Regular x-ray radiography was taken to assess fracture union (fig.2, 3, 7, 8-16). Fracture union for distal femur was seen at 8 months and for tibia it was 12 months. He was followed up for the period of two years and he is doing symptomatically better.

III. DISCUSSION

Floating Knee Injury (FKI) are uncommon injuries and its true incidence remains unknown. Patients with FKI are usually victims of high speed trauma, mostly motor vehicle accident which involves fracture of femur and tibia. Fracture of two very strong bone of human body required immense force.

It is not just an extremity injury, several organ injuries and multiple fractures are often associated, which can be life threatening. Careful evaluation of patient was carried out to identify other associated injuries and treatment priority should be given to life threatening injury over extremity injury.

The role of early total care (ETC) and orthopedic damage control (DCO) in polytrauma has always been a controversial issue. In stable patients, ETC is more appropriate and in unstable patients DCO is required. However, considerable doubt remains in borderline patients. Some author advised ETC in all patients except in more critical patients and some advised DCO and delayed skeleton stabilization [17]. The literature has also reports utility of serum lactate to assess timing of treatment and mortality, but its role is still controversial to predict survival after major injury [18]. In our case report, we did not measure serum lactate level.

The incidence of amputation was reported to 27% in FKI which had massive soft tissue crushing, severe infection and neurovascular injuries [19].

Blake and McBride [20] defined the floating knee injury as the ipsilateral fractures of the femur and the tibia. Fraser et al. in year 1978 classified floating knee in more detail [21]. This classification was again modified by Letts and Vincent [22] in 1986 which included soft tissue injury associated with these injuries.

Decisions making in clinical situation of Mangled Extremity in complex as number of factors are involved [25]. These factors are:

a) *Wound Related*

- 1) Fracture grade and type.
- 2) Compartment syndrome.
- 3) Possibility of immediate fixation.
- 4) Duration and severity of ischaemia.
- 5) Loss of soft tissues of the foot.

b) *Patient related*

1) Associated systemic injuries. 2) Shock. 3) Coagulopathy. 4) Need for vasoconstriction. 5) ARDS. 6) Age. 7) Co-morbid conditions. 8) Hospital resources. 9) Transport time. 10) Mass/military casualty. 11) Patient Co-operation.

c) *Scoring systems*d) *Expected outcome*

Mandatory weight bearing• Protective sensations• Presence of durable skin and soft tissues.●

e) *Experience of Surgeon Availability of vascular and plastic surgeons.*

All above factors have to be considered individually and collectively to decide on amputation Vs salvage.

Patients who initially confront a threatening injury often focus on the loss of the extremity rather than on the consequences of the limb salvage. Patients undergoing this procedure, will require more complex operations, longer hospitalization, and will suffer more complications than primary amputees. Tornetta and Olson reported on patients who have undergone multiple operations over a period of several years to "heroically" save a leg only to render the patient depressed, divorced, unemployed, and significantly disabled [23]. Unfortunately, "salvage" of a mangled extremity is no guarantee of functionality or employability. It is crucial for the patient and his family to realize that both salvage and early amputation by no means can reassure the patient that will return to a previous normal, pain free extremity [24]. In our case report, patient is doing well after limb salvage surgery. Functional improvement has been seen during the follow up periods (fig.18).

Significant indicators of poor outcome results of floating knee injuries are intra-articular involvement of the fractures, severity of skeletal injury, and severity of soft tissue injuries. In most of the patients, sepsis and other infection complications may be so severe and persistent that ultimately secondary amputation is required. Bondurant et al. [26] compared primary versus delayed amputations in 43 cases, including 14 primary and 29 delayed ones. Important findings included 6 deaths from sepsis in delayed amputation group compared with none in the early amputation group. In our case report, no clinical and laboratory evidence of sepsis were noted.

Although cost should not be a major deciding factor for limb salvage, many patients may be devastated by the cost, not only of medical bills but also of time off work [26]. Fainhurst [27] retrospectively compared the functional outcome of patients who sustained traumatic below knee amputations with that in patients who underwent limb salvage of Gustilo type III open tibial fractures. All patients in the early amputation

group returned to work within 6 months of injury, while those who underwent late amputation and salvage returned to work an average of 36 and 18 months after injury, respectively. The authors recommend an early amputation when confronted with borderline salvageable tibial injury. In our case report, patient returned to his work after 12 months following injury.

Fagelman et al.[28] evaluated the correlation between fractures of Gustilo and Anderson types IIIB and IIIC and the MESS index for exposed fractures of the lower limbs and found results that significantly predicted treatment, for 93%. On the other hand, Sheean et al. [29] did not find any significant difference in MESS values between amputees and patients whose limbs were salvaged. Both of these authors highlighted the importance of the presence of vascular lesions as a factor predictive of amputation. Slauterbeck et al. [30] reported that early use of a scoring system such as MESS would possibly reduce the morbidity associated with prolonged hospital stay and with the various surgical procedures performed in these cases.

The most widely described scoring systems are: the Mangled Extremity Syndrome Index (MESI) [31], the Predictive Salvage index (PSI) [32], the Mangled Extremity Severity Score (MESS) [9], and the Nerve Injury, Ischemia, Soft-Tissue Injury, Skeletal Injury, Shock, and Age of Patient (NISSSA) Score [11]. Each scoring system has a "cutoff point". If the total score exceeds the critical "cutoff point" primary or early amputation should be considered. However, these scoring systems have been criticized as being too complex and subjective with large variations in interobserver classification of mangled extremity, and as expected none of them is accurate in all cases [33]. Even among experienced surgeons there is disagreement regarding the criteria of these scoring systems, which cannot be used with confidence in clinical practice, because their use has not led to specific outcomes.

In our case report, inspite of MESS score (Table-2) of 7 which is suggestive of amputation, we have chosen the option of salvaging the limb after considering the patient factor. With MESS score of 7 or greater, amputation is the eventual result. No scoring system, however, can replace experience and good clinical judgment. It needs to be remembered that advances made in limb salvage surgery has been matched by advances in amputation surgery and prosthesis design. More often, however, the choice between limb salvage and amputation must be made on the basis of expectations and desires of individual patient and the family.

Although scoring systems may be helpful, the patient's status cannot simply be summarized by a score number. A closer look reveals that many questions remain unanswered. These systems fail to consider factors related to the patient's quality of life,

pain, occupation, age, wishes, social support system, family status, and financial resources. The training and experience of the surgical team may also influence the decision to amputate or reconstruct. Although these considerations are more subjective, undoubtedly they are very important. The true measure of successful limb salvage lies in the overall function and satisfaction of the patient. In our case report, the main reason for limb salvage, despite the indication for amputation according to MESS and borderline ganga scoring system (score of 16) (Table-1), it was patient and physician's choice in relation to his occupation, condition and psychology.

The final decision regarding the treatment for patients with a diagnosis of an exposed fracture of the tibia needs to take into account future functionality, availability of recovery, the patient's profile and the surgeon's expertise. The criteria for indicators such as the MESS score and the fracture classification need to be carefully analyzed so that the limb salvage can be done in an effective manner and so that amputation is done in precisely selected cases.

There are many studies in literature suggesting internal fixation of both the fractures of floating knee should be done as early as possible [35]. Ratliff found that internal fixation of both fractures was less likely to cause the development of knee stiffness and lessen the duration of hospital stay [36]. Ostrum treated patients with retrograde femoral nailing and antegrade tibia nailing through 4 cm medial parapatellar incision [37]. The average time to union of femoral fracture was 14.7 weeks and for tibial fracture was 23 weeks. Theodoratos *et al.* [21] recommended intramedullary nailing as the best choice of treatment, except for grades IIIB and IIIC open fractures. In our case report, patient was treated with initially by application of external fixator followed by ilizarov fixator application. Time to union of femoral fracture was 8 months and for tibia fracture was 12 months.

In literature we found that outcome of FKI were often variable, some author reported 0 excellent result and other author reported excellent result up to 53%. These variable results might be due to associated neurovascular injury, open fracture and variable fracture pattern with FKI [34]

Severe trauma to the lower extremity with vascular compromise often leaves the surgeon with a very difficult clinical decision; whether to salvage or amputate [39, 41, 46]. With today's therapeutic and technological advances, the trauma surgeon has the ability to salvage viability in most, if not all, severe lower-extremity injuries. Obviously, there have been some remarkable successes and, unfortunately, some horrendous failures. Patients have suffered protracted hospital courses, multiple surgeries, multiple subsequent hospitalizations, complications (especially infections and nonunions), and the inevitable delayed amputation of a viable but nonfunctional extremity [39,

43, 46]. The major decision in open fractures of the lower extremities with vascular compromise is not whether one can but whether one should attempt salvage. This decision is often clearly mandated by the nature and extent of the lower-extremity injury and the patient as a whole. Lower-extremity replantation, except maybe in children, is clearly unwarranted. Lang *et al.* have shown that division of the posterior tibial nerve as part of the lower-extremity injury in adults is an absolute indication for amputation [42]. Recent literature supports the overall poor prognosis for successful salvage for Type IIIC tibial injuries (open tibial fractures with vascular insufficiency) [6, 38, 42]. The occurrence of a crush injury and/or warm ischemia longer than six hours makes limb salvage futile. The traumatized patient with vascularly compromised open fractures in the lower extremity requires prioritization of life-saving procedures and is often best served by amputation. However, there are a large number of patients with lower-extremity injuries with vascular compromise who do not fit the above criteria for primary amputation. Recent literature has stressed the need for establishing objective criteria to assist the surgeon in the urgent decision for salvage versus primary amputation [39, 41, 46].

Even though the predicted value for amputation of a MESS score higher than or equal to 7 appears to be very high, with larger numbers there inevitably will be a limb with a score of higher than or equal to 7 that will be salvaged, or a limb with a score of lower than or equal to 6 that will require delayed amputation.

IV. CONCLUSION

As a majority of cases represent a "gray zone" of unpredictable prognosis, and borderline cases are a dilemma, the decision to amputate or not amputate should not always be made during the initial evaluation. Although scoring systems and "cutoff points" are useful, the final decision for limb salvage should be based on team experience, technical skills, multidisciplinary consultation, tertiary-care facility, and the profile of the patient. Scoring systems should be used only as guides to supplement the surgeon's clinical judgment and experience. Excellent clinical and functional outcomes can be achieved with individualized planning of treatment which is dependent on the patient's general condition, type of fracture, and severity of soft tissue injury by an experienced multidisciplinary team instead of a fixed definite management for all patients.

With great effort and good team work (like vascular and orthopaedic surgeons) badly comminuted compound injuries (Type III C injury) can be managed well with ilizarov fixation. Even though the decision of amputation versus Salvage was based on more scientific / scoring system, patient's option should be taken, especially in borderline cases considering the present medico legal scenario.

Clinical massage: The treatment of mangled extremity treatment should be based on evidence based literature along with a clinical evaluation of every individual patient. Scores are helpful, but should not be taken as the sole indication for amputation.

Consent: The patient has given his informed consent for the case report to be published.

Competing interests: The authors declare that the interpretation of data or presentation of information is not influenced by any personal or financial relationship with other people or organizations.

Conflicts of Interest: Nil.

Source of Support: None.

REFERENCES RÉFÉRENCES REFERENCIAS

- de Mestral C, Sharma S, Haas B, Gomez D, Nathens AB (2013) A contemporary analysis of the management of the mangled lower extremity. *J Trauma Acute Care Surg* 74: 597-603.
- Blake R, McBryde A., Jr The floating knee: Ipsilateral fractures of the tibia and femur. *South Med J*. 1975; 68:13-6. [PubMed] [Google Scholar].
- Goel SA, Bhavsar NM, Makwana H, Lil NA, Patel PR. Epidemiology and patterns of lower limb injuries at a tertiary care hospital in Ahmedabad? *Int J Med Res Rev*. 2015; 3(5):490-496. doi: 10.17511/ijmrr.2015.i5.094. [Google Scholar].
- Kamath A.F., Horneff J.G., Esterhai J.L., Lackey W.G., Jeray K.J., Broderick J.S. Open fractures. In: Bhandari M., editor. Evidence-based orthopedics. Blackwell Publishing; Oxford: 2012. pp. 617-626. [Google Scholar].
- Gustilo R.B., Anderson J.T. Prevention of infection in the treatment of one thousand and twenty-five open fractures of long bones: retrospective and prospective analyses. *J Bone Joint Surg Am*. 1976; 58(4):453-458. [PubMed] [Google Scholar].
- Gustilo R.B., Mendoza R.M., Williams D.N. Problems in the management of type III (severe) open fractures: a new classification of type III open fractures. *J Trauma*. 1984; 24(8):742-746. [PubMed] [Google Scholar].
- Busse J.W., Jacobs C.L., Swiontkowski M.F., Bosse M.J., Bhandari M. Complex limb salvage or early amputation for severe lower-limb injury: a meta-analysis of observational studies. *J Orthop Trauma*. 2007; 21(1):70-76. [PubMed] [Google Scholar].
- Helfet D.L., Howey T., Sanders R., Johansen K. Limb salvage versus amputation. Preliminary results of the Mangled Extremity Severity Score. *Clin Orthop Relat Res*. 1990; (256):80-86. [PubMed] [Google Scholar].
- Johansen K., Daines M., Howey T., Helfet D., Hansen S.T., Jr. Objective criteria accurately predict amputation following lower extremity trauma. *J Trauma*. 1990; 30(5):568-572. discussion 572-3. [PubMed] [Google Scholar].
- Robertson P.A. Prediction of amputation after severe lower limb trauma. *J Bone Joint Surg Br*. 1991; 73(5):816-818. [PubMed] [Google Scholar].
- McNamara M.G., Heckman J.D., Corley F.G. Severe open fractures of the lower extremity: a retrospective evaluation of the Mangled Extremity Severity Score (MESS) *J Orthop Trauma*. 1994; 8(2):81-87. [PubMed] [Google Scholar].
- Georgiadis G.M., Behrens F.F., Joyce M.J., Earle A.S., Simmons A.L. Open tibial fractures with severe soft-tissue loss. Limb salvage compared with below-the-knee amputation. *J Bone Joint Surg Am*. 1993; 75(10):1431-1441. [PubMed] [Google Scholar].
- Huh J, Stinner DJ, Burns TC, et al. Infectious complications and soft tissue injury contribute to late amputation after severe lower extremity trauma. *J Trauma* 2011; 71(1 Suppl):S47-51.
- Harris AM, Althausen PL, Kellam J, et al. Complications following limb-threatening lower extremity trauma. *J Orthop Trauma* 2009; 23:1-6.
- Parrett BM, Matros E, Pribaz JJ, Orgill DP. Lower extremity trauma: trends in the management of soft-tissue reconstruction of open tibia-fibula fractures. *Plast Reconstr Surg*. 2006; 117(4):1315-1322. [PubMed] [Google Scholar]
- Meyer M, Evans J. Joint orthopaedic and plastic surgery management of types III and IV lower limb injuries. *Br J Plast Surg*. 1990; 43(6):692-694. [PubMed] [Google Scholar]
- P. Lichte, P. Kobbe, D. Dombroski, H.C. Pape Damage control orthopedics: current evidence *Curr Opin Crit Care*, 18 (6) (2012), pp. 647-650 CrossRefView Record in Scopus Google Scholar.
- J.D. Pal, G.P. Victorino, P. Twomey, T.H. Liu, M.K. B ullard, A.H. Harken Admission serum lactate levels do not predict mortality in the acutely injured patient *J Trauma*, 60 (3) (2006), pp. 583-587. CrossRefView Record in Scopus Google Scholar.
- A.J. Dwyer, R. Paul, M.K. Mam, A. Kumar, R.A. Gosselin Floating knee injuries: long-term results of four treatment methods *Int Orthop*, 29 (5) (2005), pp. 314-318. Cross RefView Record in Scopus Google Scholar.
- P. Lichte, P. Kobbe, D. Dombroski, H.C. Pape Damage control orthopedics: current evidence *Curr Opin Crit Care*, 18 (6) (2012), pp. 647-650. CrossRefView Record in Scopus Google Scholar.
- J.D. Pal, G.P. Victorino, P. Twomey, T.H. Liu, M.K. B ullard, A.H. Harken Admission serum lactate levels do not predict mortality in the acutely injured patient *J Trauma*, 60 (3) (2006), pp. 583-587. CrossRefView Record in Scopus Google Scholar
- H. Pape, M. Stalp, M. Griensven, A. Weinberg, M. D ahlweit, H. Tscherne Optimal timing or secondary

- surgery in polytrauma patients: an evaluation of 4314 serious-injury cases *Chirurg*, 70 (11) (1999), pp. 1287-1293 View Record in Scopus Google Scholar.
23. Tornetta P, 3rd, Olson SA. Amputation versus limb salvage. *Instr Course Lect*. 1997; 46:511–518. [PubMed] [Google Scholar]
24. MacKenzie EJ, Bosse MJ, Pollak AN, Webb LX, Swiontkowski MF, Kellam JF, Smith DG, Sanders RW, Jones AL, Starr AJ, McAndrew MP, Patterson BM, Burgess AR, Castillo RC. Long-term persistence of disability following severe lower-limb trauma. Results of a seven-year follow-up. *J Bone Joint Surg Am*. 2005; 87:1801–1809. doi: 10.2106/JBJS.E.00032. [PubMed] [CrossRef] [Google Scholar].
25. Shawen SB Keeling JJ Brawstetter J Kirk KL Fickr JR *Foot ankle Clin* 15 (2010) 63
26. Bondurant FJ, Cotler HB, Buckle R, Miller-Crotchett P, Browner BD. The medical and economic impact of severely injured lower extremities. *J Trauma*. 1988; 28:1270–1273. doi: 10.1097/00005373-198808000-00023. [PubMed] [CrossRef] [Google Scholar]
27. Fairhurst MJ. The function of below-knee amputee versus the patient with salvaged grade III tibial fracture. *Clin Orthop Relat Res*. 1994; 301:227–232. [PubMed] [Google Scholar]
28. Fagelman M.F., Epps H.R., Rang M. Mangled extremity severity score in children. *J Pediatr Orthop*. 2002; 22(2):182–184. [PubMed] [Google Scholar].
29. Sheean A.J., Krueger C.A., Napierala M.A., Stinner D.J., Hsu J.R. Skeletal Trauma and Research Consortium (STReC). Evaluation of the mangled extremity severity score in combat-related type III open tibia fracture. *J Orthop Trauma*. 2014; 28(9):523–526. [PubMed] [Google Scholar]
30. Slauterbeck J.R., Britton C., Moneim M.S., Clevenger F.W. Mangled extremity severity score: an accurate guide to treatment of the severely injured upper extremity. *J Orthop Trauma*. 1994; 8(4):282–285. [PubMed] [Google Scholar]
31. Gregory RT, Gould RJ, Peclet M, Wagner JS, Gilbert DA, Wheeler JR, Snyder SO, Gayle RG, Schwab CW. The mangled extremity syndrome (M.E.S.): A severity grading system for multisystem injury of the extremity. *J Trauma*. 1985; 25:1147–1150. doi: 10.1097/00005373-198512000-00005. [PubMed] [CrossRef] [Google Scholar]
32. Howe HR, Jr, Poole GV, Jr, Hansen KJ, Clark T, Plonk GW, Koman LA, Pennell TC. Salvage of lower extremities following combined orthopedic and vascular trauma. A predictive salvage index. *Am Surg*. 1987;53:205–208. [PubMed] [Google Scholar]
33. Hiatt MD, Farmer JM, Teasdall RD. The decision to salvage or amputate a severely injured limb. *J South Orthop Assoc*. 2000; 9:72–78. [PubMed] [Google Scholar]
34. F.C. Kao, Y.K. Tu, K.Y. Hsu, J.Y. Su, C.Y. Yen, M.C. Chou Floating knee injuries: a high complication rate *Orthopedics*, 33 (1) (2010), p. 14 CrossRefView Record in Scopus Google Scholar.
35. Bansal VP, Singhal V, Mam MK, Gill SS. The floating knee 40 cases of ipsilateral fractures of the femur and the tibia. *Int Orthop*. 1984; 8:183–7. [PubMed] [Google Scholar]
36. Ratliff AH. Fractures of the shaft of the femur and tibia in the same limb. *Proc R Soc Med*. 1968; 61:906–8. [PMC free article] [PubMed] [Google Scholar]
37. Ostrum RF. Treatment of floating knee injuries through a single percutaneous approach. *Clin Orthop Relat Res*. 2000;(375):43–50. [PubMed] [Google Scholar]
38. Caudle, R. J., and Stern, P. J.: Severe open fractures of the tibia. *J. Bone Joint Surg*. 69A:801, 1987.
39. Hansen, S. T., Jr.: The type 111-C tibial fracture: Salvage or amputation. *J. Bone Joint Surg*. 69A:799, 1987.
40. Hansen, S. T., Jr.: Overview of the severely traumatized lower limb: Reconstruction versus amputation. *Clin. Orthop*. 243:17, 1989.
41. Lange, R. H.: Limb reconstruction versus amputation decision making in massive lower extremity trauma. *Clin. Orthop*. 243:92, 1989.
42. Lange, R. H., Bach, A. W., Hansen, S. T., and Johansen, K.: Open tibial fractures with associated vascular injuries: Prognosis for limb salvage. *J. Trauma* 25:203, 1985.
43. Moore, T. J., Green, S. A., and Garland, D. E.: Severe trauma to the lower extremity long-term sequelae. *South. Med. J*. 82:843, 1987.

Figures

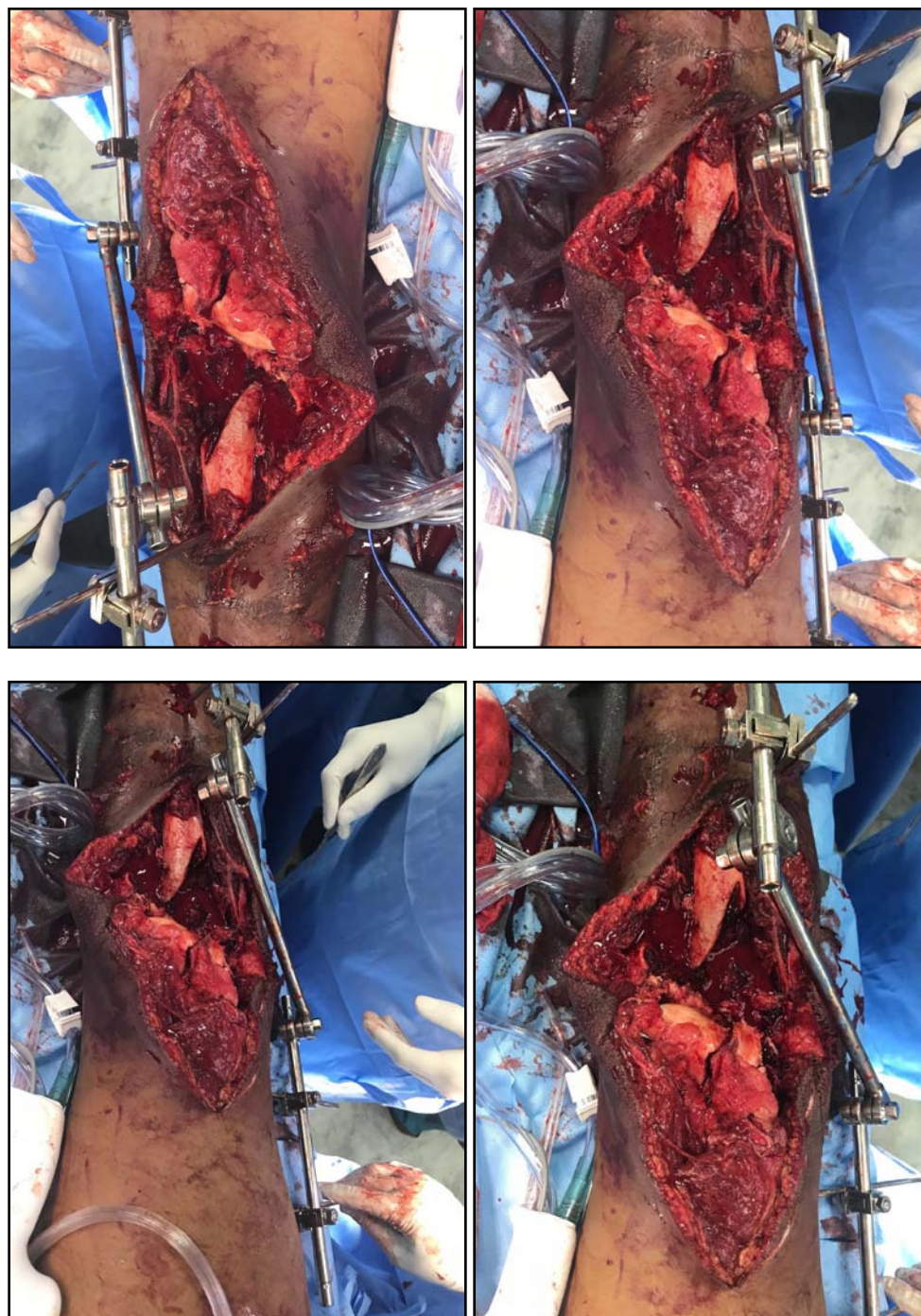


Fig. 1: Pre-operative clinical images of right knee with distal thigh and proximal leg anterior aspect.

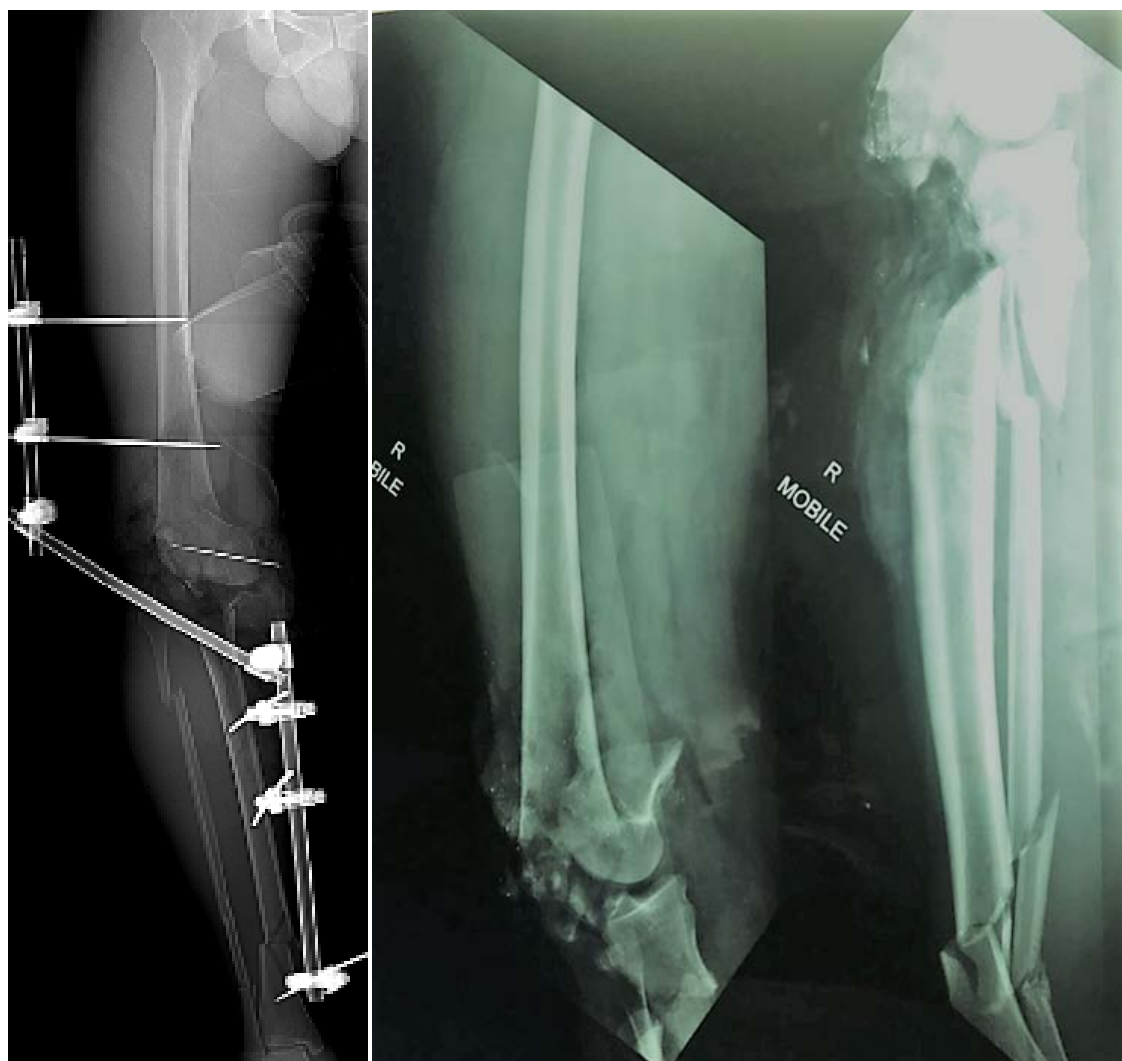


Fig. 2: Showing x-ray radiography Antero-posterior view of right lower limb, lateral view of right knee with distal femur and lateral view of right leg.



Fig. 3: Showing x-ray lateral view right distal leg with ankle.

Open Bone Fractures Gustilo-Anderson Classification					
Type 1	Wound length <1cm	Minimal soft tissue damage, contamination, and comminution	Periosteum intact	Adequate soft-tissue coverage	Vasculature intact
Type 2	Wound length ≥1cm	Moderate soft tissue damage, contamination, or comminution	Periosteum intact	Adequate soft-tissue coverage	Vasculature intact
Type 3a	Extensive wound	Extensive soft tissue damage, contamination, or comminution; segmental fracture	Periosteal stripping	Adequate soft-tissue coverage	Vasculature intact
Type 3b	Extensive wound	Extensive soft tissue damage, contamination, or comminution; segmental fracture	Periosteal stripping	Inadequate soft-tissue coverage	Vasculature intact
Type 3c	Extensive wound	Extensive soft tissue damage, contamination, or comminution; segmental fracture	Periosteal stripping	Inadequate soft-tissue coverage	Arterial Damage

Fig. 4: Showing Gustilo-Anderson classification.


Table 1: Showing Ganga hospital open injury severity score which is 16 in our patient

PARAMETER	FINDING	POINTS
INJURY TO SKIN AND FASCIA	NONE	0
	WOUND WITHOUT SKIN LOSS NOT OVER FRACTURE	1
	WOUND WITHOUT SKIN LOSS OVER THE FRACTURE	2
	WOUND WITH SKIN LOSS NOT OVER THE FRACTURE	3
	WOUND WITH SKIN LOSS OVER THE FRACTURE	4
	CIRCUMFERENTIAL WOUND WITH SKIN LOSS	5
INJURY TO BONE AND JOINTS	NONE	0
	TRANSVERSE, OBLIQUE OR SMALL BUTTERFLY FRAGMENT (< 50% OF CIRCUMFERENCE)	1
	LARGE BUTTERFLY FRAGMENT (>= 50% OF CIRCUMFERENCE)	2
	COMMINUTION OR SEGMENTAL FRACTURE WITHOUT BONE LOSS	3
	FRACTURE WITH BONE LOSS < 4 CM	4
	FRACTURE WITH BONE LOSS >= 4 CCM	5
INJURY TO MUSCULOTENDINOUS AND NERVE UNITS	NONE	0
	PARTIAL INJURY TO UNITE	1
	COMPLETE BUT REPAIRABLE	2
	COMPLETE AND UNREPAIRABLE	3
	LOSS OF ONE COMPARTMENT	4
	LOSS OF TWO OR MORE COMPARTMENTS	5

Comorbid Conditions		
1.	> 12 hours interval between injury and debridement	+2
2.	age > 65 years	0
3.	contamination of the wound with sewage, organic material, farmyard, etc	+2
4.	systolic blood pressure < 90 mm Hg at presentation (hypotension)	+2
5.	compartment syndrome or another major injury to the same limb	0
6.	increased risk anesthesia due to drug-dependent diabetes mellitus or cardiorespiratory diseases	0
7.	polytrauma involving chest and abdomen with ISS > 25 and/or fat embolism	0

Our score in this patient is 16.If the score is 17 it is for amputation.

Table 2: Showing MESS scoring system which is 7 in our patient (score of 7 and more then that is indication for amputation).

MANGLED EXTREMITY SEVERITY SCORE (MESS SCORE) 				
LIMB ISCHEMIA FOR > 6 HOURS	NO	YES		
LIMB ISCHEMIA	REDUCED PULSE BUT NORMAL PERFUSION+1	PULSELESS, PARESTHESIAS, SLOW CAPILLARY REFILL +2	COOL, PARALYSIS, NUMB/INSENSATE +3	
PATIENT AGE	< 30 0	30-50 +1	≥ 50 +2	
SHOCK	SBP > 90 MMHG CONSISTENTLY 0	HYPOTENSION +1	TRANSIENT PERSISTENT HYPOTENSION +2	
INJURY MECHANISM	LOW ENERGY (STAB. GUNSHOT, SIMPLE FRACTURE) +1	MEDIUM ENERGY (DISLOCATION, OPEN/MULTIPLE FRACTURES) +2	HIGH ENERGY (HIGH SPEED MVA OR RIFLE SHOT) +3	VERY HIGH ENERGY (HIGH SPEED TRAUMA WITH GROSS CONTAMINATION) +4

CRITICAL ACTIONS:
Patients with a MESS ≥ 7 are likely to require amputation secondary to their limb trauma.
Our Score in this Patient is 7.

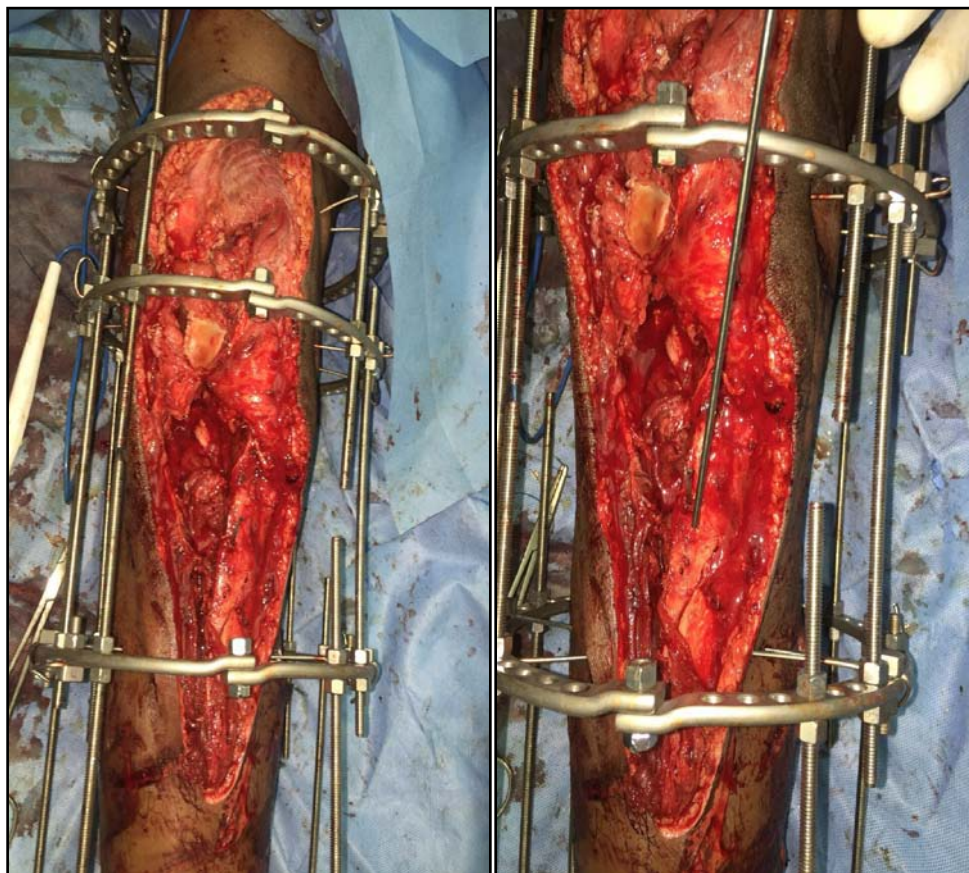


Fig. 5: Showing intra-operative images following ilizarov fixator application.

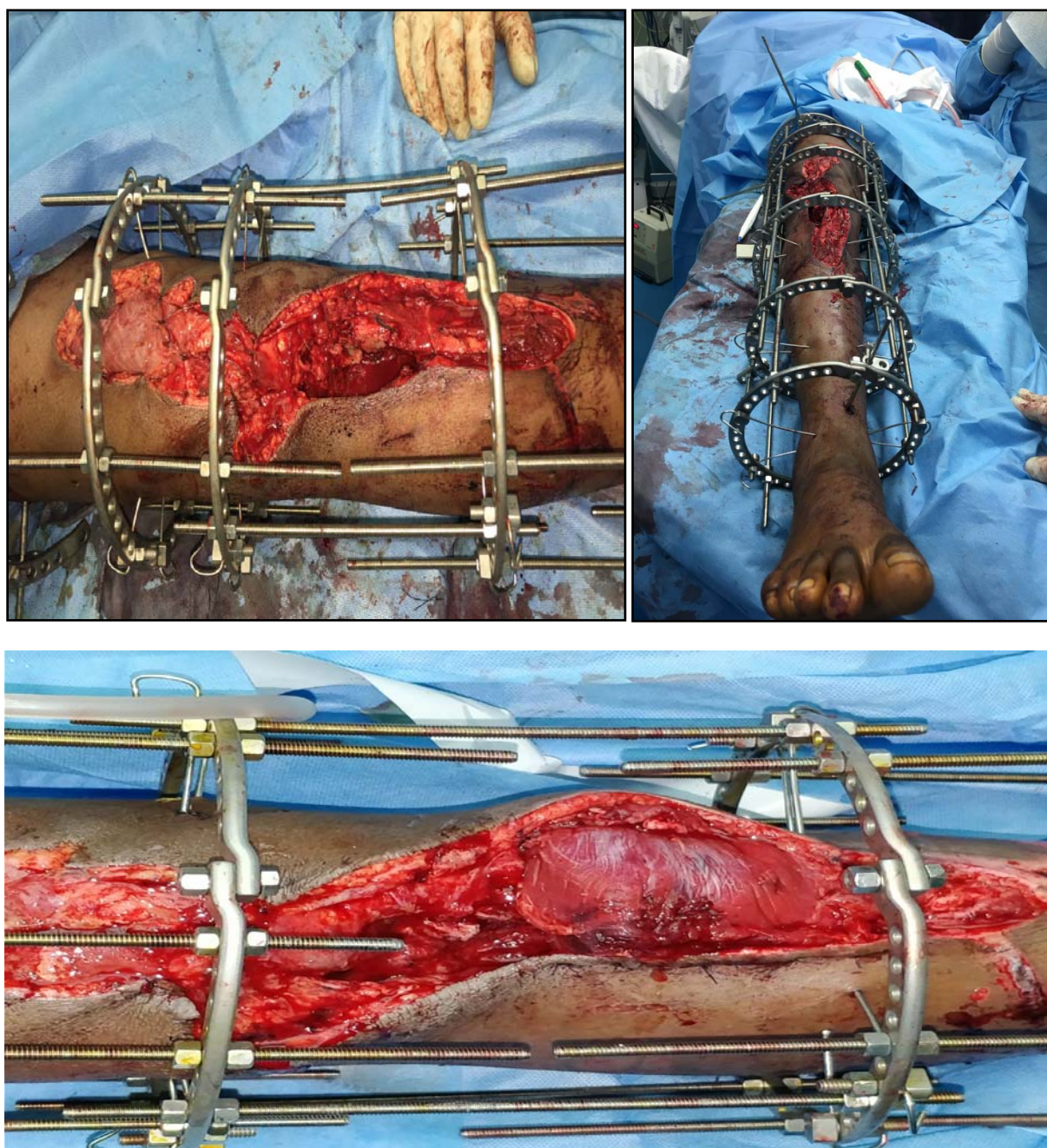


Fig. 6: Showing intra-operative images following ilizarov fixator application.

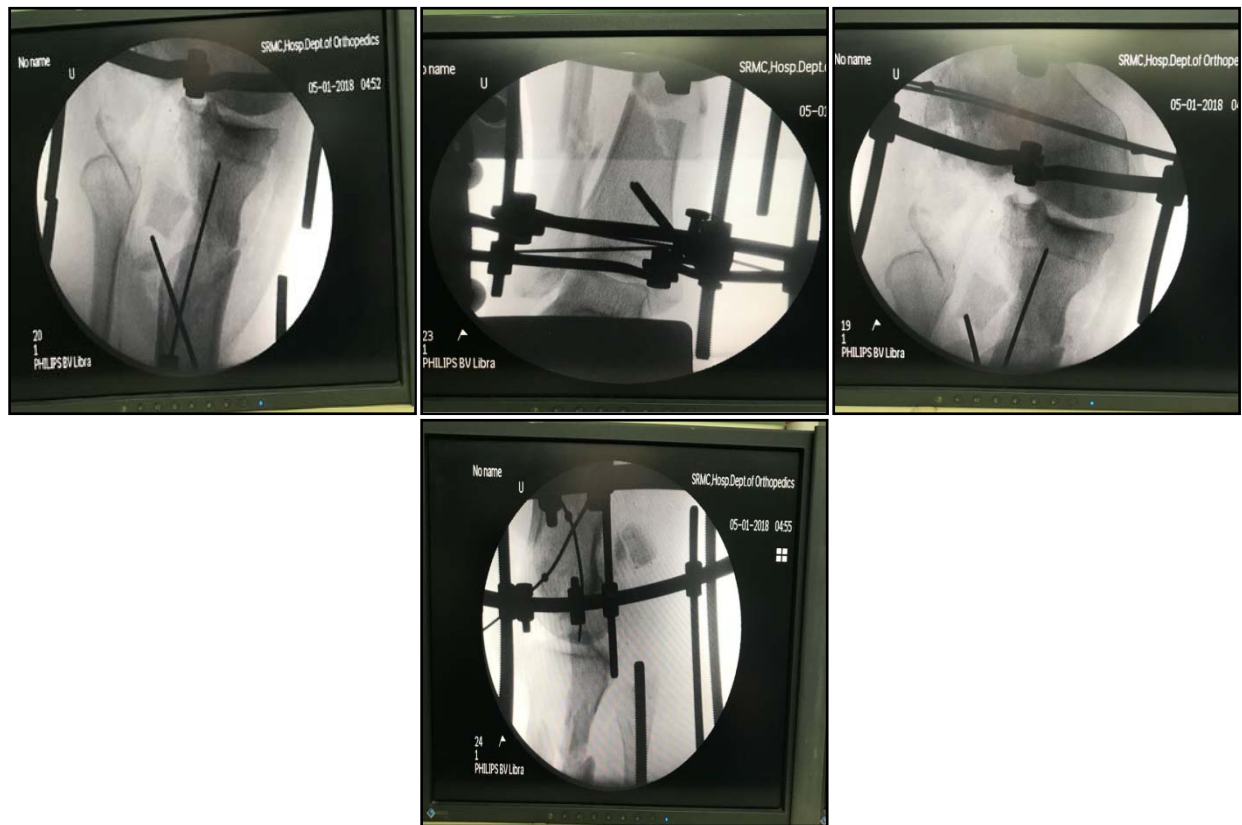


Fig. 7: Showing Intra-operative C-arm images following ilizarov fixator application.

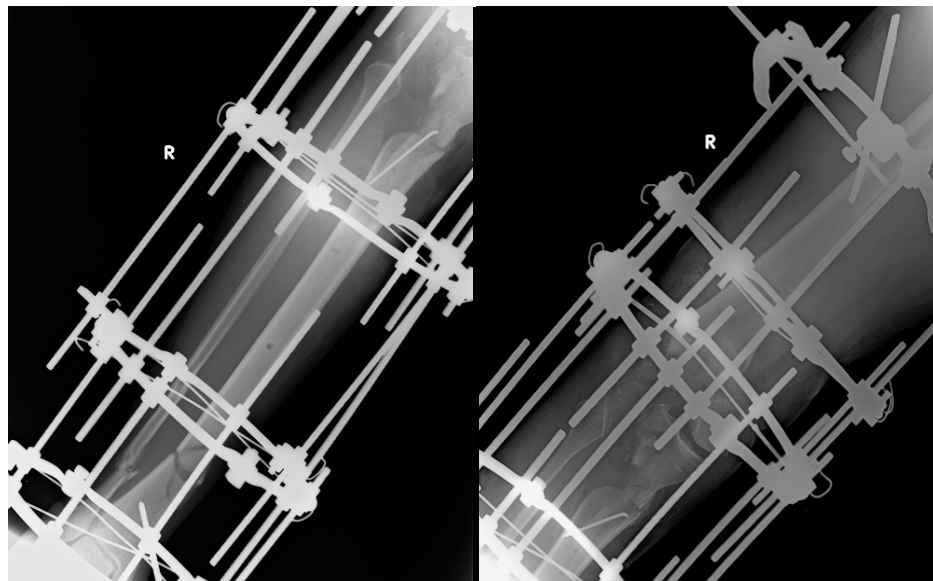


Fig. 8: Showing immediate post-operative x-ray right leg and knee AP view following ilizarov fixator.

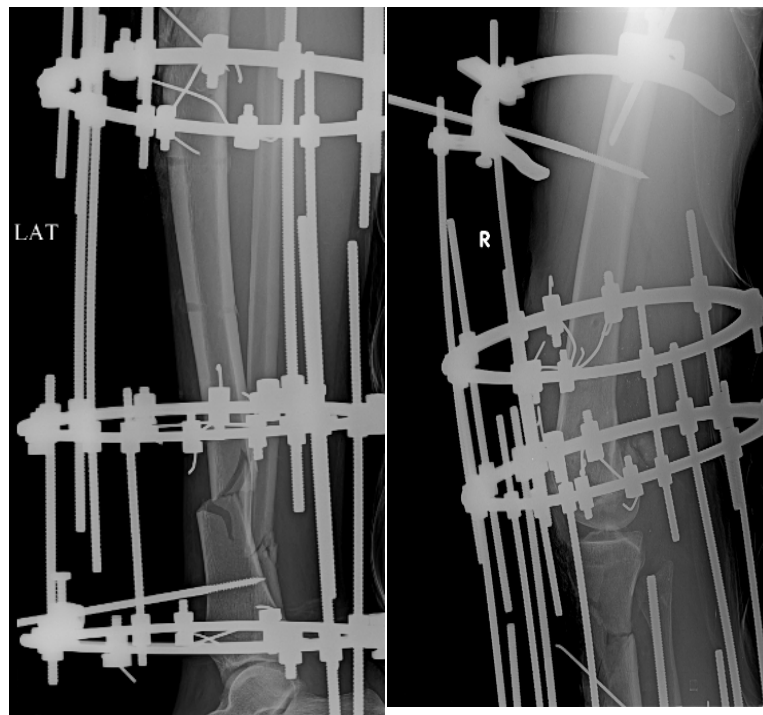


Fig. 9: Showing immediate post-operative x-ray right leg and knee lateral view following ilizarov fixator.

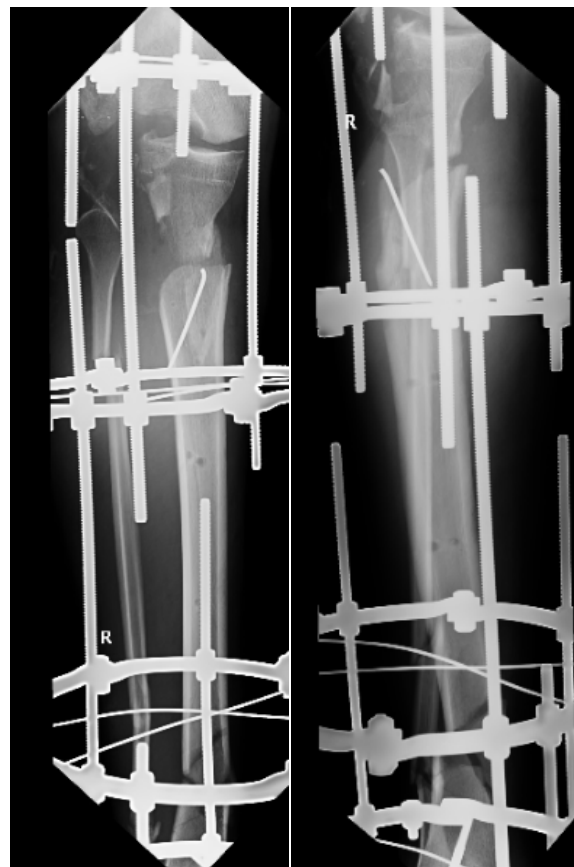


Fig. 10: Showing 1 month post-op x-ray right leg AP and lateral views.

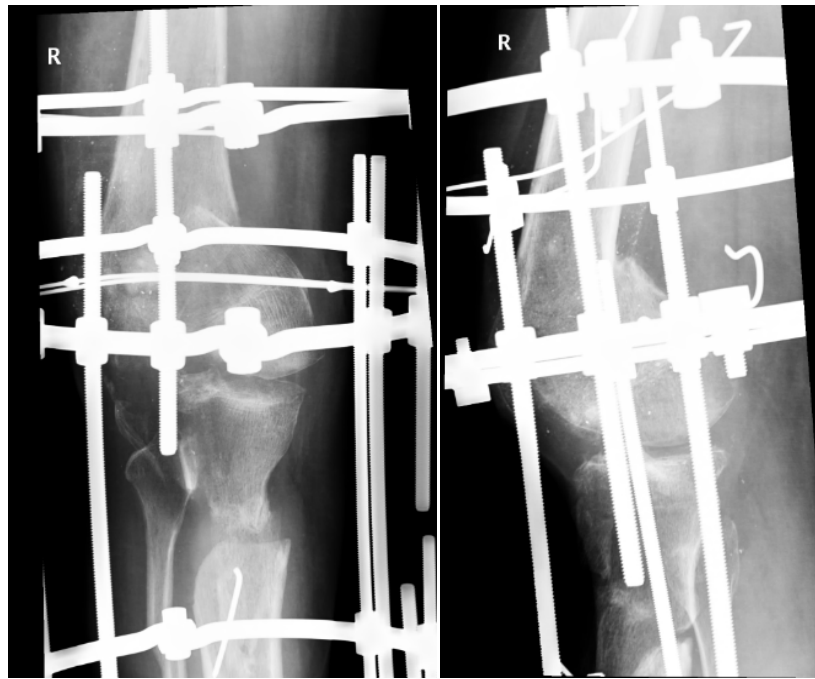


Fig. 11: Showing 3 month post-op x-ray right knee AP and lateral views.

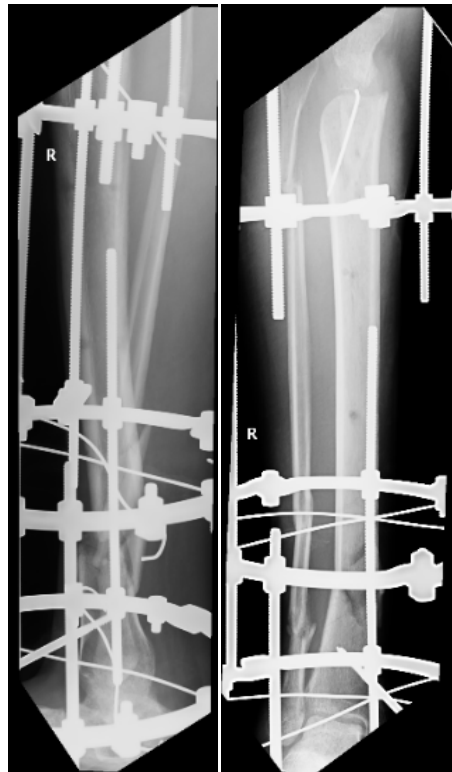


Fig. 12: Showing 3 month post-op x-ray right leg AP and lateral views.

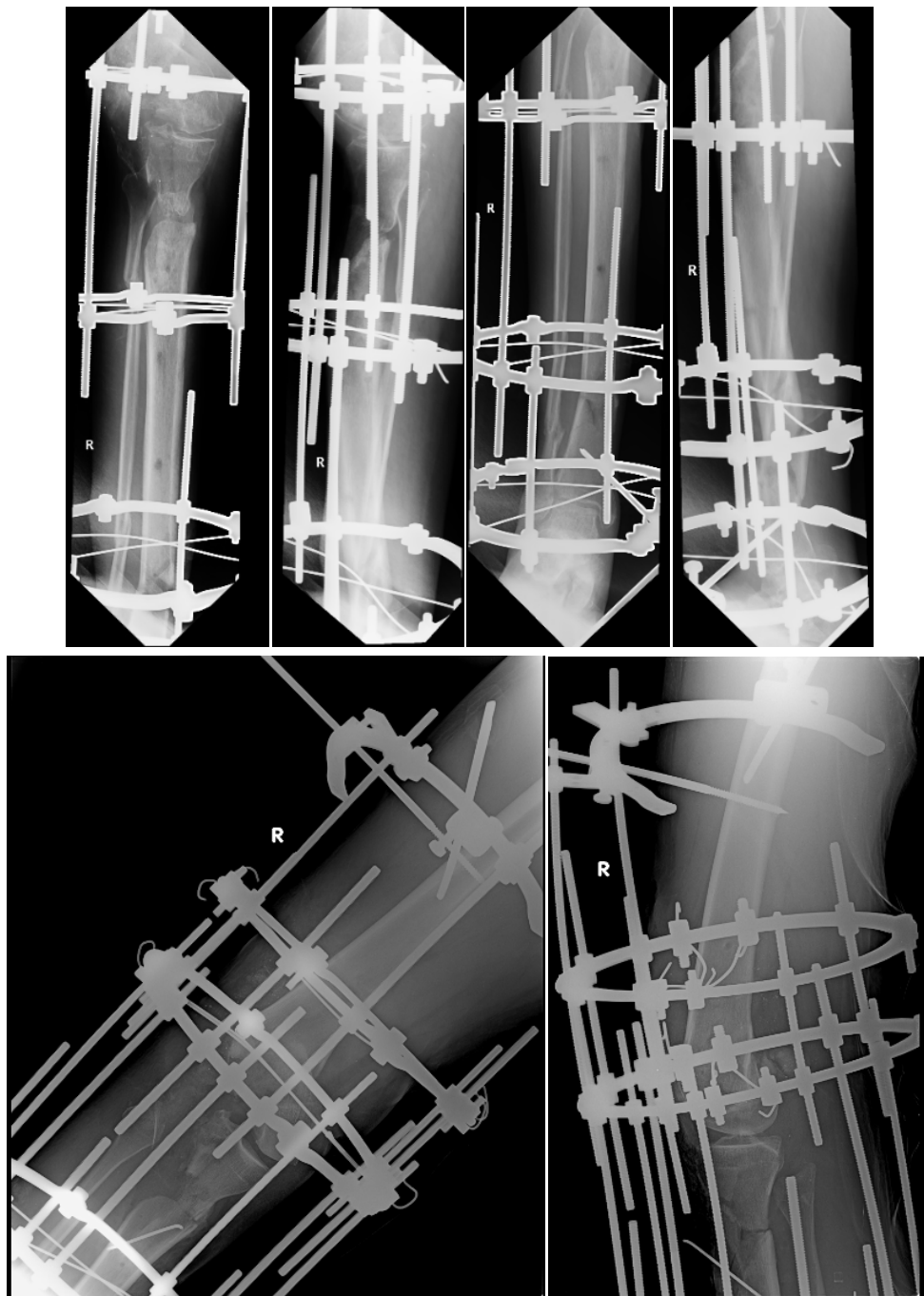


Fig.13: Showing 6 month post-op x-ray right leg, knee and ankle AP and lateral views.



Fig. 14: Showing 12 month post-op x-ray right leg and knee AP and lateral views.

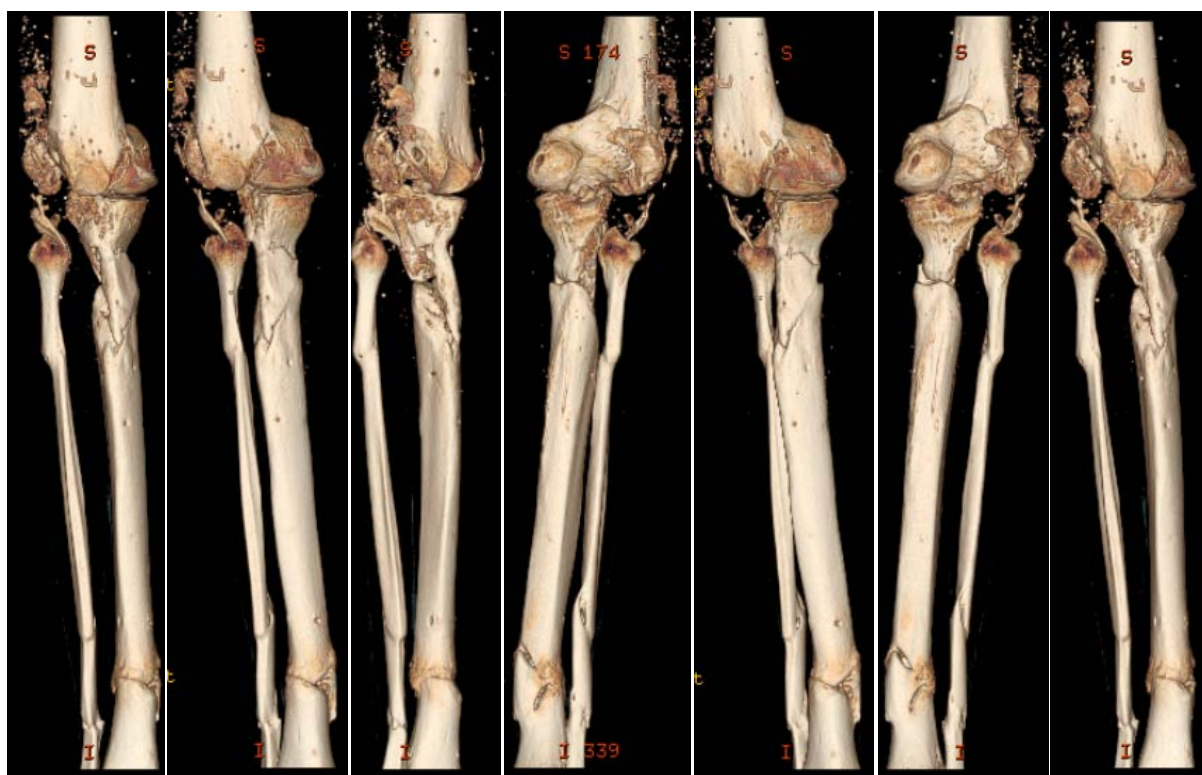


Fig. 15: Showing 12 month post-op CT scan 3d reconstruction of right distal femur, knee and leg.



Fig. 16: Showing 18 month post-op x-ray right knee and leg AP and lateral views.

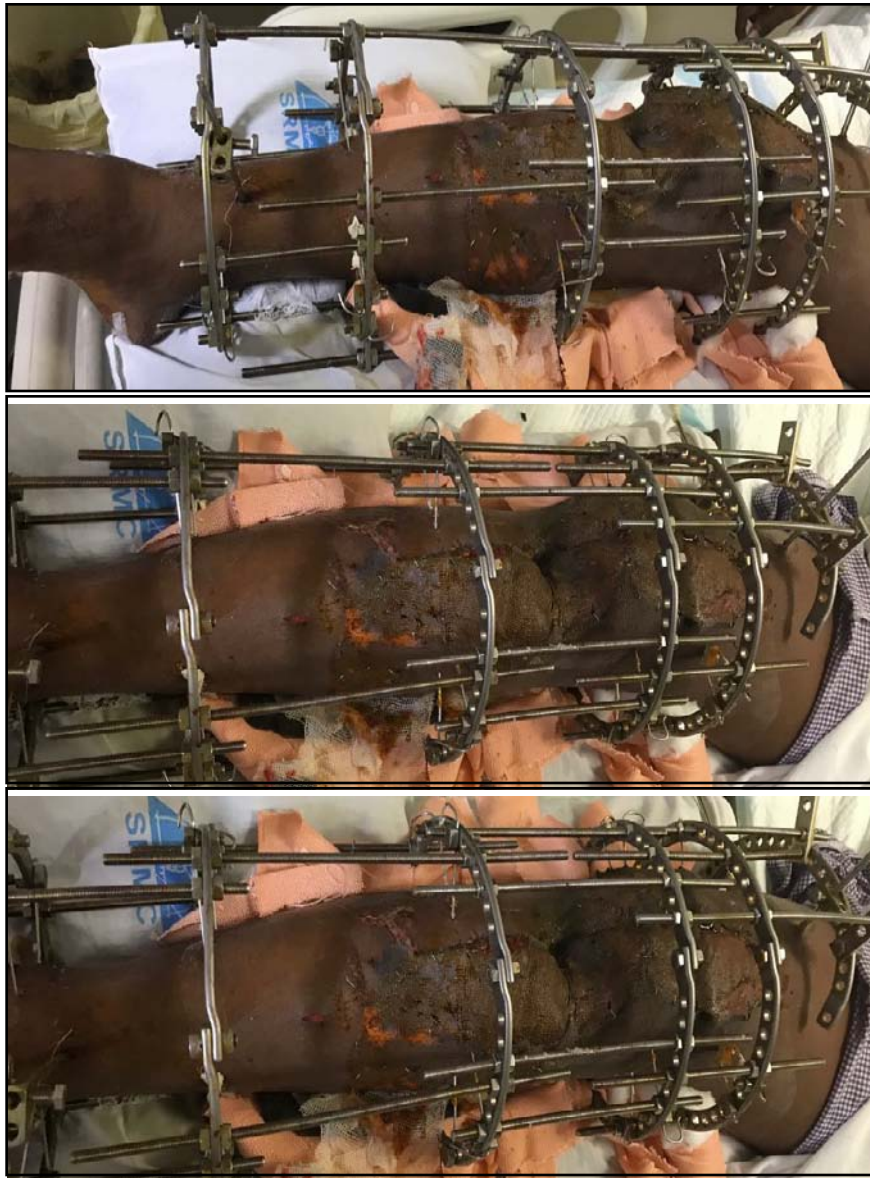


Fig. 17: Immediate post-operative clinical wound images after right limb reconstruction.





Fig. 18: Postoperative 12 months clinical images.



Fig. 19: Modified Fraser's classification for open floating knee injury.